

Climate Change & The Environment

Tree Planting Target Assessment: 2017 - 2025

Sierra Leone's MTNDP 2024-2030 commits to planting an additional 10,000,000 trees as part of its environmental resilience strategy. This infographic traces progress from 2017 to 2025 — a

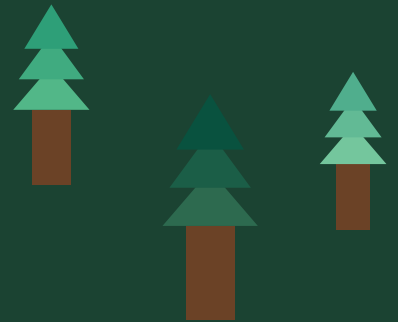


KEY CHALLENGE

Reforestation severely hampered by unchecked tree cutting across Sierra Leone, causing severe environmental damage and massive loss of biodiversity.

STRATEGIC OBJECTIVE:

Strengthen environmental governance, promote sustainable management of natural resources, and build resilience to climate change for the well-being of Sierra Leoneans.

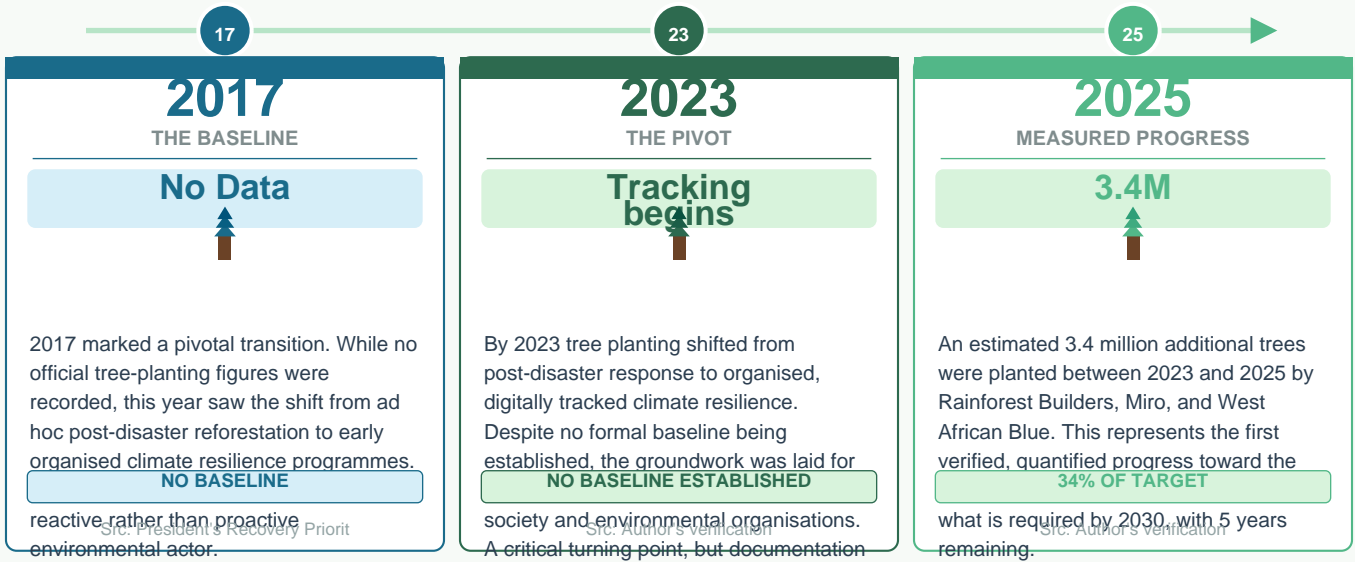
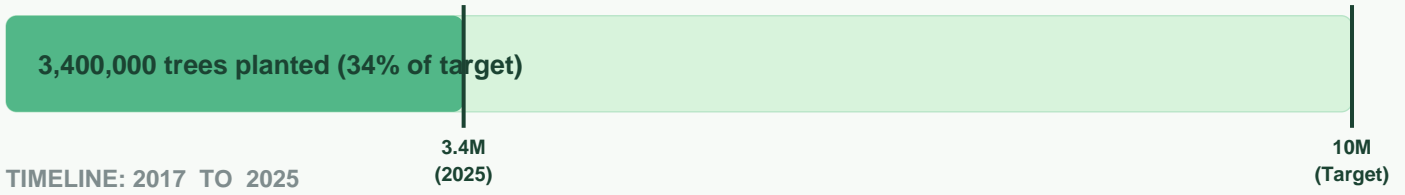


TREE PLANTING TARGET: YEAR-BY-YEAR BREAKDOWN

MTNDP 2024-2030 Target 96 | Environment | Sierra Leone

Salone Scorecard 2026

PROGRESS TOWARD 10 MILLION TREE TARGET



THE CONTRADICTION: PLANTING vs DEFORESTATION

PROGRESS 3.4M trees planted <ul style="list-style-type: none">Rainforest Builders activeMiro reforestation programmeWest African Blue initiativeDigitally tracked plantingOrganised climate resilience	KEY CHALLENGE Unchecked tree cutting <ul style="list-style-type: none">Severe environmental damageMassive loss of biodiversityReforestation underminedNo enforcement mechanismsNet gain uncertain
---	--

ORGANISATIONS DRIVING PROGRESS (2023-2025)

Rainforest Builders Community-led reforestation	Miro Organised planting drives	West African Blue Coastal & mangrove focus
---	--	--

BIODIVERSITY CONTEXT:
Sierra Leone's biodiversity — including its tropical rainforests and coastal mangroves — faces an existential threat from unchecked logging. Planting 3.4M trees while losing mature forest at scale means the net environmental gain may be negligible.

STRATEGIC OBJECTIVES (MTNDP 2024-2030):
Strengthen environmental governance | Promote biodiversity conservation & wildlife management | Sustainable management of natural resources in protected areas | Build climate change resilience and adaptive capability